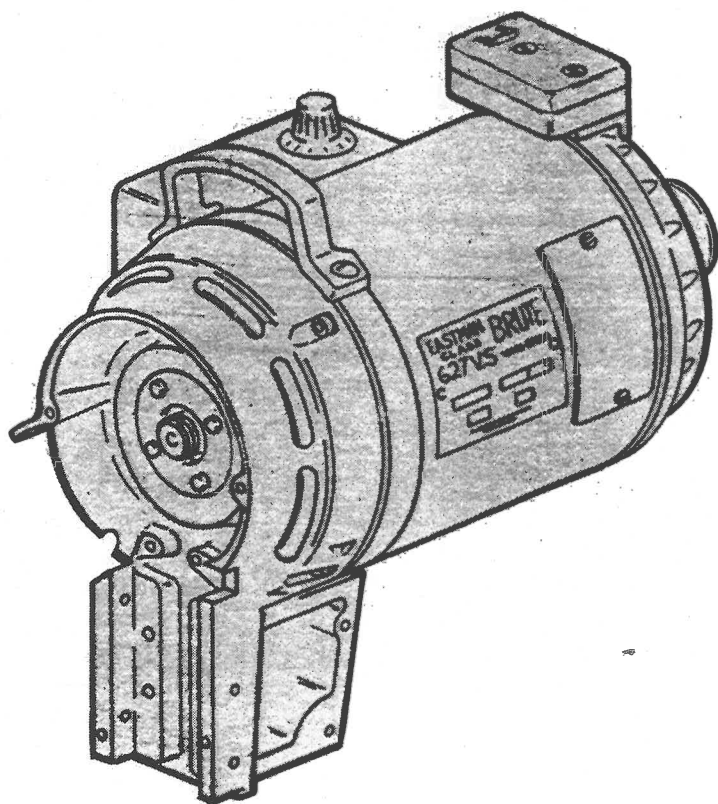


# Variable Speed Motor Assembly

## Illustrated Parts List

576C1-677 (220/90V)

576C1-668 (110/90V)



ITEM	PART NO.	DESCRIPTION	QTY.
1	104C1-6	Dial Indicator	1
2	830C1-73	Speed Control Board (110/90V)	1
3	830C1-75	Speed Control Board (220/90V)	1
4	830C1-74	Speed Control Board (220/180V)	1
5	20C12-173	Screw, Thread Forming	4
6	53C11-158	Cover, Speed Control	1
7	20C12-178	Screw, 10-32 x 1/4 Round Head	3
8	8C15-11	Insulation, Cover	1
9	8C15-10	Insulation, Brush-Cover	1
10	576C1-676	Motor Assembly	1
11	207C1	Grommet	1
12	20C12-174	Screw, Brush Cover	1
13	53C11-156	Brush Cover	1
14	8C15-9	Brush Insulation	1
15	190C1-12	Armature (90V) (STD)	1
16	190C1-14	Armature (180V)	1
17	614C1-32	Motor Fan	1
18	29C6-165	Motor Adaptor	1
	29C6-176	Motor Adaptor (Micro Fog only)	1
19	536C1-68	Front Bearing Housing Assembly	1
20	308C15-5	Screw, 10-32 x 3/4 Socket Head Cap	4
21	12C1-49	Washer, Lock	4
22	20C12-175	Screw, Adapter	4
23	22C1-40	Handle, Carrying	1
24	300C14-6	Screw, 10-32 x 5/8 Round Head	2
25	305C10-1	Screw, 6-32 x 1/4 Grounding	1
26	12C1-32	Washer, Lock	1
27	62C10-83	Terminal Block Bracket	1
28	302C15-3	Screw, 10-32 x 1/2 Flat Head	2
29	13C1-9	Turn Knob	1
30	34C1-51	Spring	1
31	303C10-205	Screw, 6-32 x 5/16 Oval Head	3
32	53C7-44	Rear Cover	1
33	18C6-16	Ring, Snap	1
34	4C1-145	Locknut, Rotor Shaft	1
35	4C2-87	Nut, Clutch	1
36	55C4-143	Spacer, Clutch Nut	1
37	90C6-46	Ball Bearing	1
38	12C1-12	Washer, Loading Spring	1
39	308C15-8	Screw, 10-32 x 2 1/2 Socket Head Cap	4
40	90C1-166	Rear Bearing Housing	1
41	20C12-176	Screw, Brush Holder	4
42	12C1-23	Washer, Lock Internal Tooth	1
43	50C11-43	Clamp	1
44	830C1-55	Brush Holder Assembly	1
45	708C1-17	Brush	2
46	34C1-61	Brush Spring	2
47	71C3-51	Brush Retainer Clip	2
48	234C01-109	Resistor, In-line	1

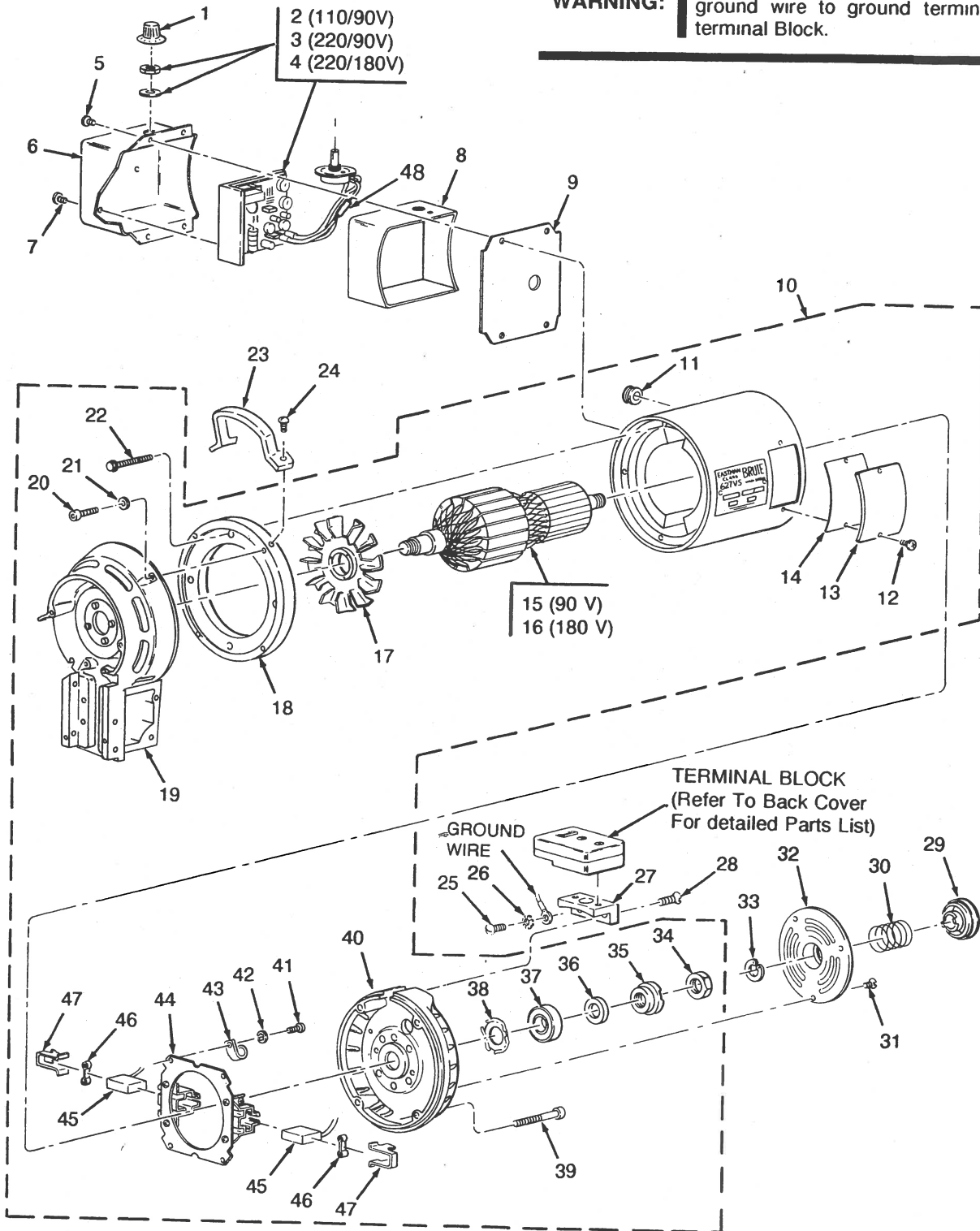
**NOTE:**

Please specify model and serial number of machine when ordering parts.

Item numbers are for reference only

Please specify PART NUMBERS when ordering replacement parts.

**WARNING:** Terminal Block must be grounded. Attach ground wire to ground terminal "E" on terminal Block.



From the library of: Diamond Needle Corp